

## Configuration Management (CM) in RCS Region North

Cecilia Lindberg

Date 2016-09-15

# Contents

---

1

ORGANISATION

2

RCS CM DEFINITION

3

GOVERNING DOCUMENTS

4

RN CM JOB DESCRIPTION

5

BASIC PRODUCT STRUCTURE

# BOMBARDIER TRANSPORTATION

## Rail Vehicles



- Light rail vehicles
- Metros
- Commuter trains
- Regional trains
- Intercity trains
- High speed trains
- Locomotives

## Transportation Systems



- Driverless Systems: Monorails, Metros, People Movers
- Light rail systems
- Metro Systems
- Intercity Systems
- E-mobility Solutions
- Operations and Maintenance

## Services



- Fleet Management
- Asset Life Management
- Material Solutions
- Component re-engineering and overhaul

## Rail Control Solutions



- Integrated control systems
- Automatic train protection and operation
- Interlocking systems
- Wayside equipment
- Services

## Propulsion & Controls



- Traction converters
- Auxiliary converters
- Traction drives
- Control and communication

## Bogies



- Portfolio to match entire range of rail vehicles
- Full scope of service over the lifetime of a bogie

# RAIL CONTROL SOLUTIONS (RCS)

## World wide presence

### MAIN SITES

Stockholm, Sweden (Headquarters)

Amsterdam, Netherlands	Kuala Lumpur, Malaysia
Bangkok, Thailand	Madrid, Spain
Beijing, China	Mannheim, Germany
Braunschweig, Germany	Melbourne, Australia
Copenhagen, Denmark	Moscow, Russia
Delhi, India	Oslo, Norway
Durban, South Africa	Pittsburgh, USA
Gothenburg, Sweden	Plymouth, UK
Hässleholm, Sweden	Rome, Italy
Helsinki, Finland	São Paulo, Brazil
Katowice, Poland	Vadodara/Baroda, India
Kharkiv/Kharkov, Ukraine	Warsaw, Poland

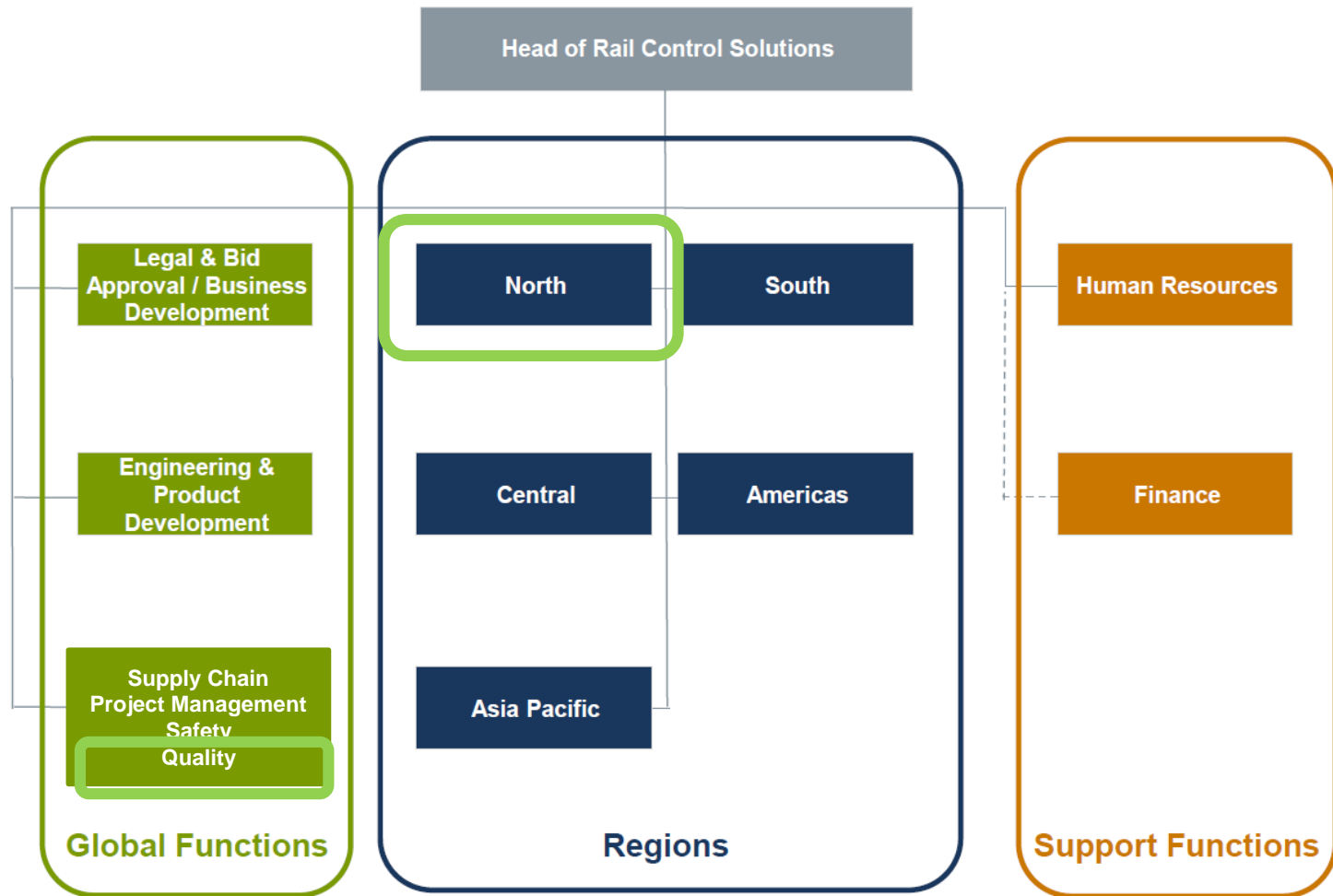


= countries where RCS is active



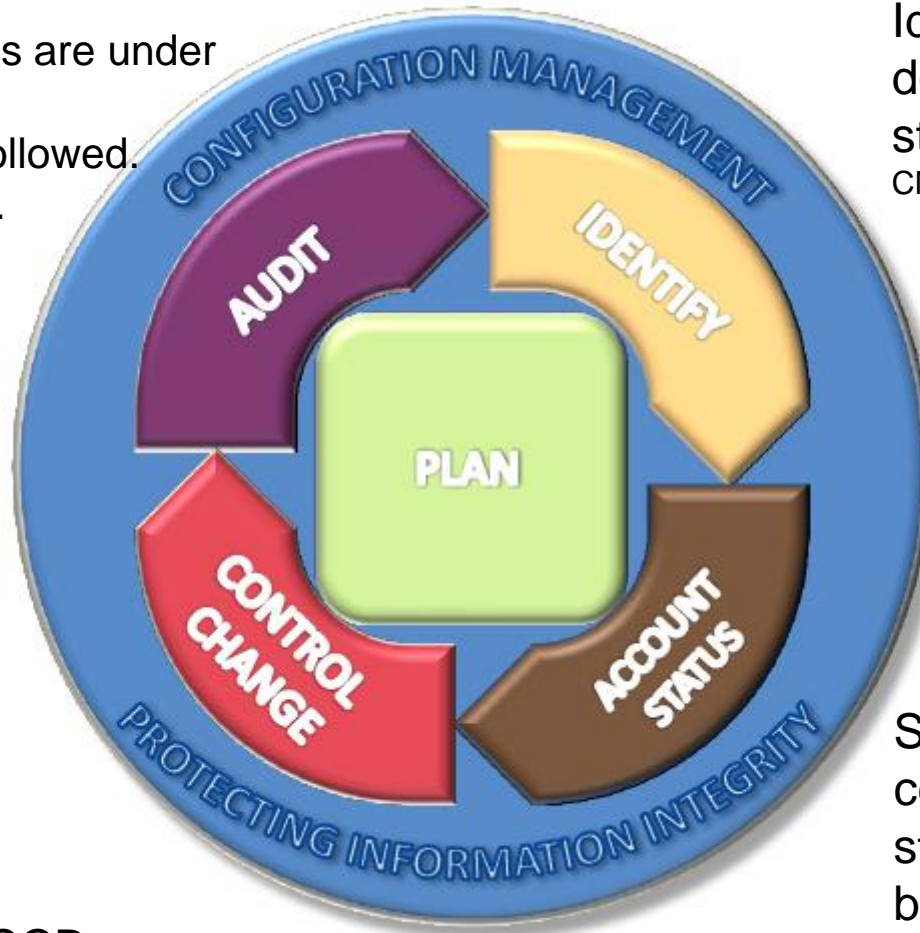
RCS major sites

# RCS ORGANISATION



# DEFINITION CM FUNCTIONS

Quality Assurance  
CM ensures deliverables are under  
config control.  
Naming convention is followed.  
Changes are controlled.



Identify products,  
documents,  
structures and storage.  
CM creates Document Plan.

Identify and control  
changes (NCR/CR,  
Change Orders) at CCB.  
CM chairman at CCB and administrates the NCRs.

Status/snapshot at  
certain  
stages in the project for  
both CRs and changes.  
CM creates baselines in CM  
Synergy.

# RCS CM GOVERNING DOCUMENTS

Document	No	Scope	Applies to	Where
CM Directive	016007	Methodology, measures and objectives of CM, which is the basis for the deployment of Configuration Management in the organization and its implementation	All organisational units	eBTM
CM Standard	015680	Defines the standards, conventions and rules for CM that are applicable for CM deployment in the organization and for CM implementation	All organisational units	eBTM
CM Procedure	015673	Give further information on how to realize the BT CM Principles (016007)	All organisational units	eBTM
Rules for Products, Docs and Files	002408	Provides the identification rules for products, documents and computer files	All organisational units	eBTM
RN CM Plan	1DOC-1007661	Describes the methods and procedures that will be used for CM on RCS RN	Region North	Synergy

# Region North CM Job Description

---

The CM is responsible for

- providing directions for the document management within Region North customer projects
- handling of the project/product database and follow up of the project's document management performance
- deliveries of documents both internally and to customer
- coordination of technical change management as leader of the Change Control Board

# BASIC PRODUCT STRUCTURE



SA

**Specific Application**

GA

**Generic Application**

GP

**Generic Product**

# **BOMBARDIER**

the evolution of mobility